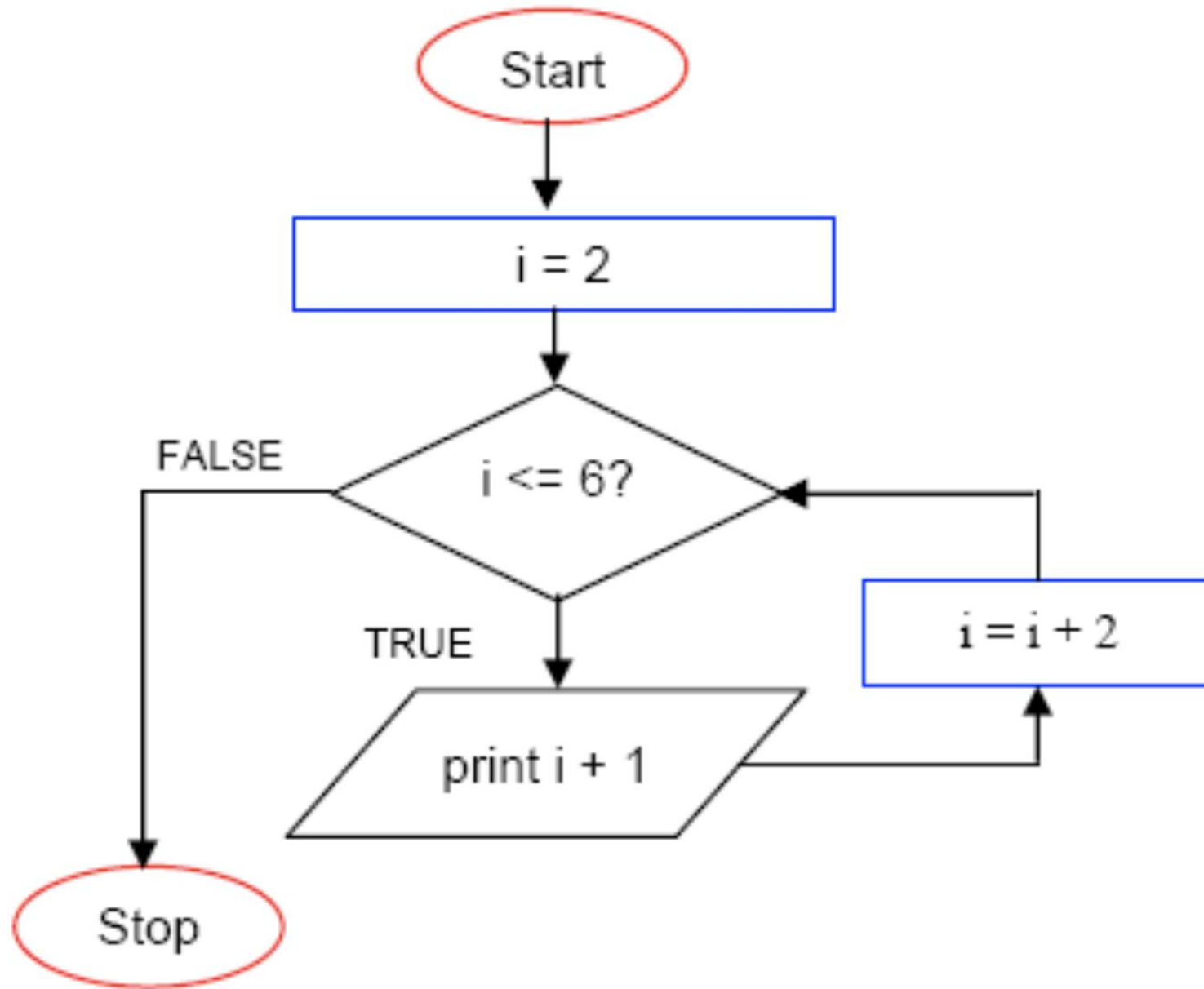


Practice Flowcharting

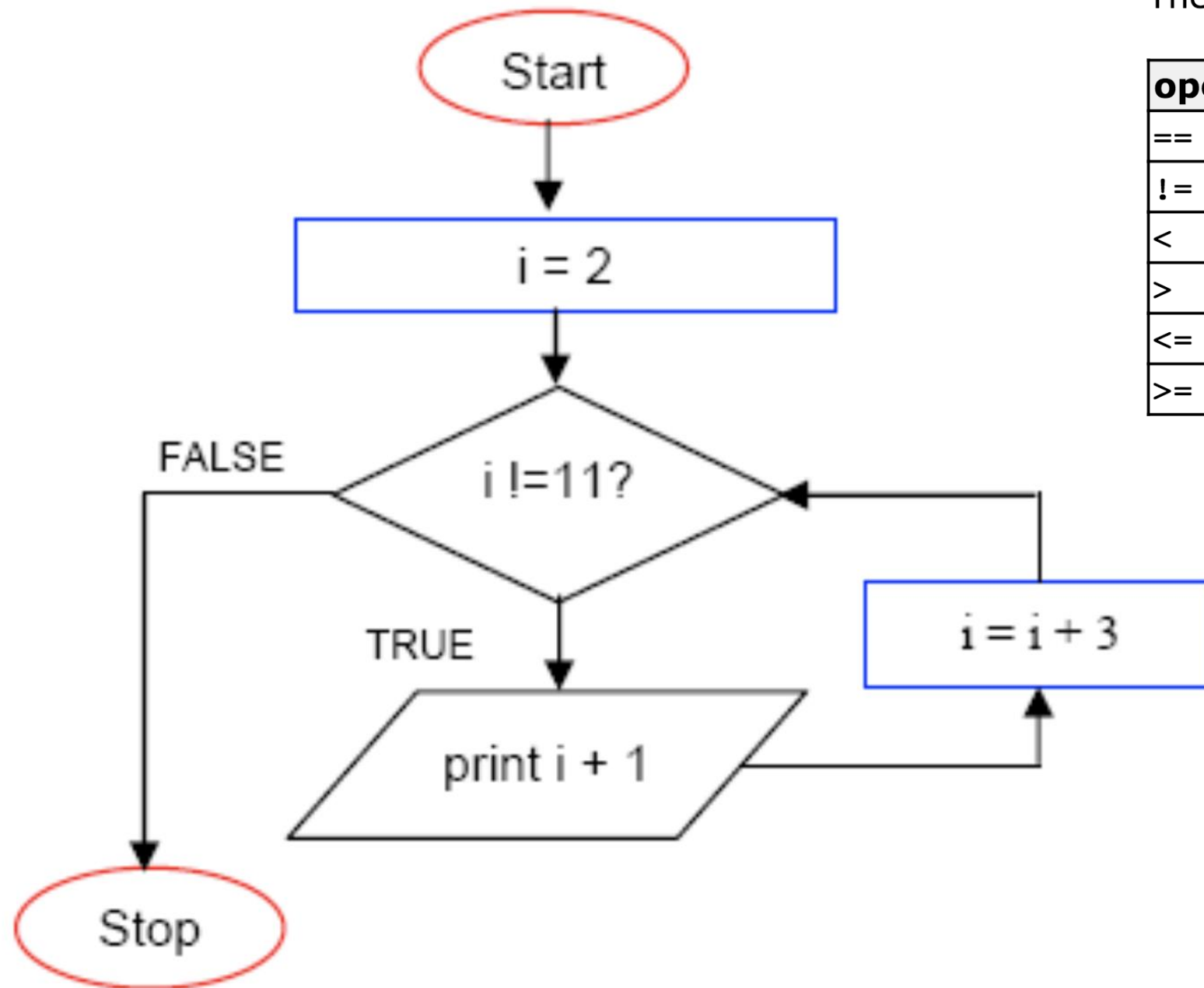
The relational operators in C++ are:

operator	description
==	Equal to
!=	Not equal to
<	Less than
>	Greater than
<=	Less than or equal to
>=	Greater than or equal to



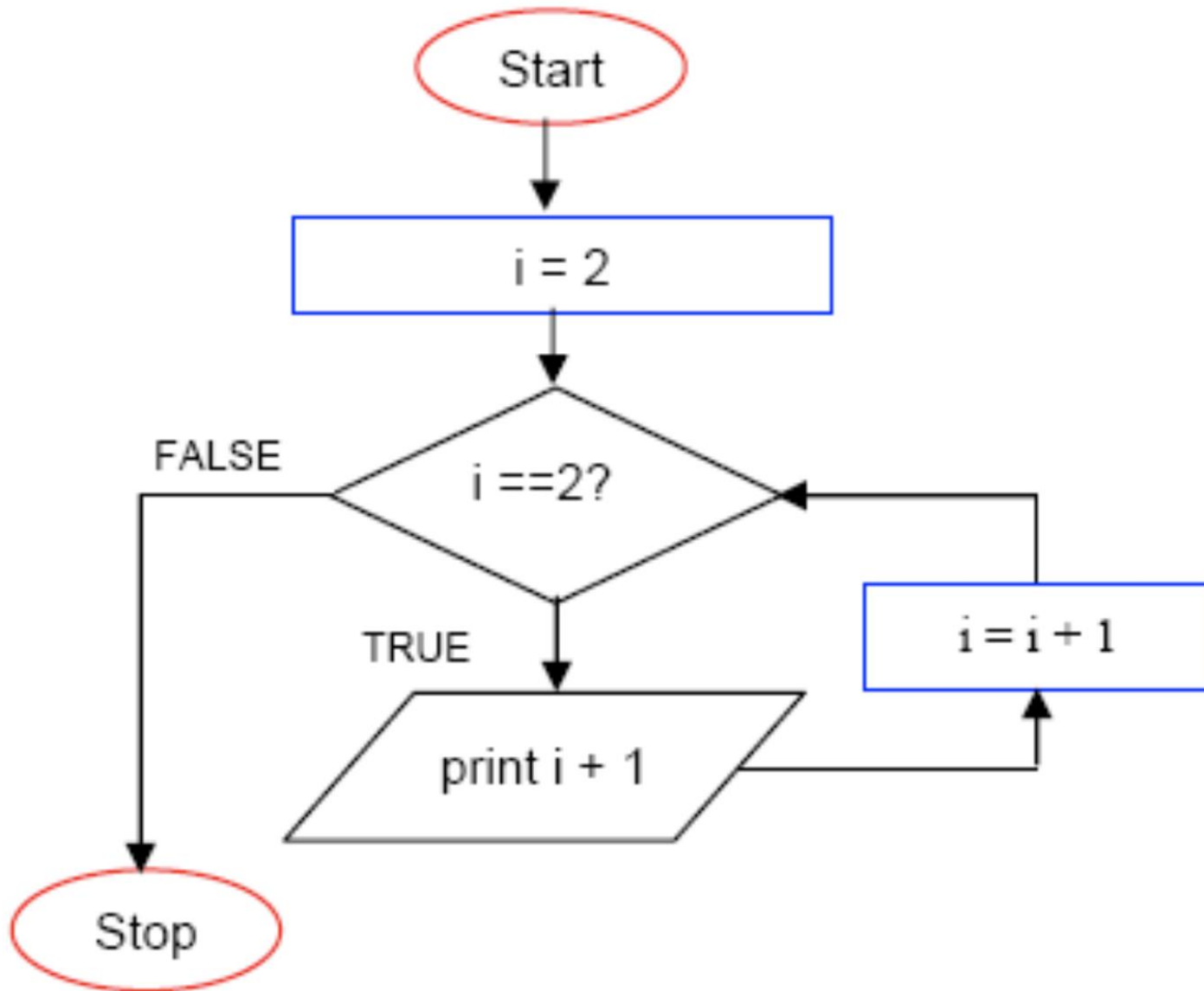
The relational operators in C++ are:

operator	description
==	Equal to
!=	Not equal to
<	Less than
>	Greater than
<=	Less than or equal to
>=	Greater than or equal to



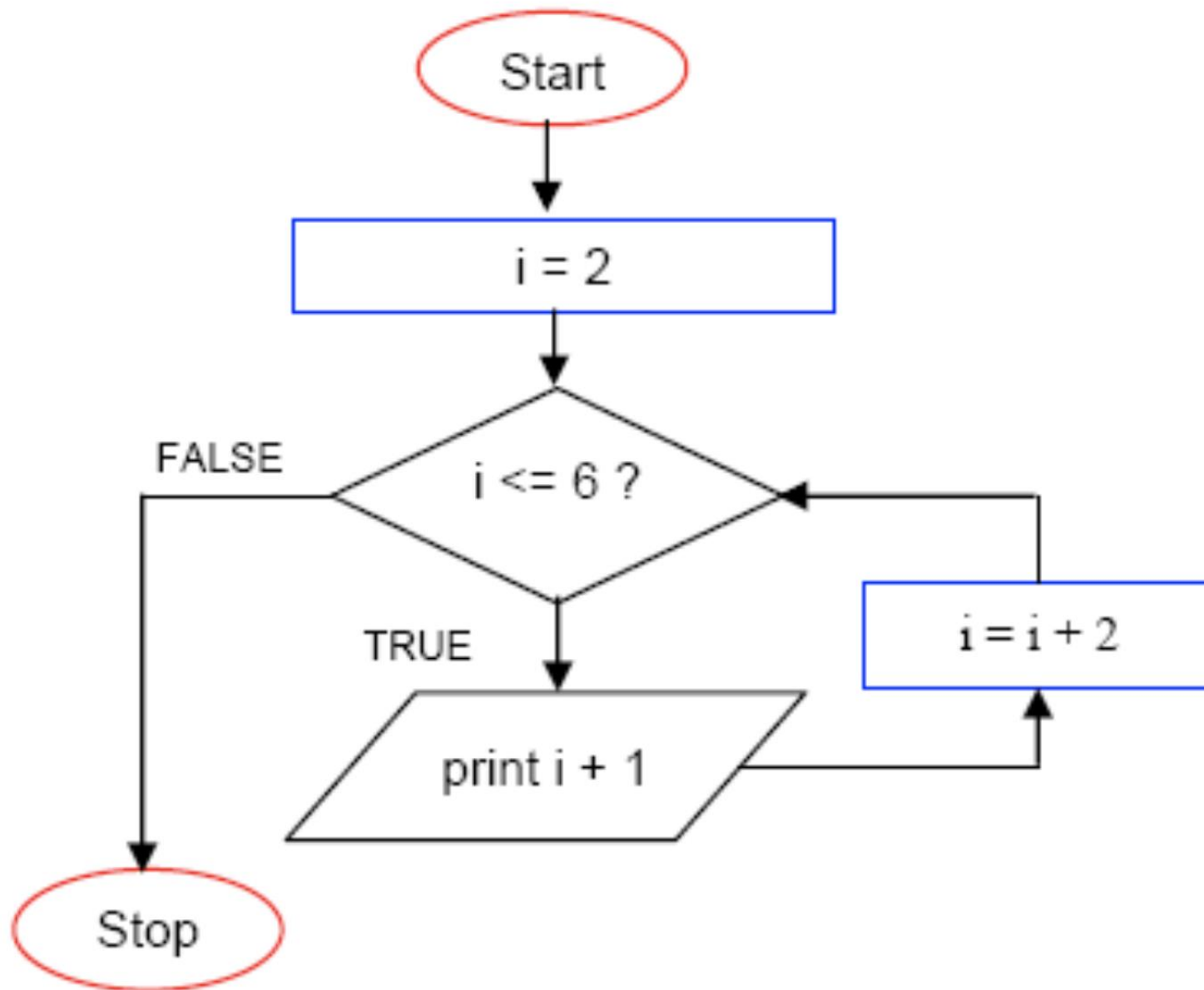
The relational operators in C++ are:

operator	description
==	Equal to
!=	Not equal to
<	Less than
>	Greater than
<=	Less than or equal to
>=	Greater than or equal to



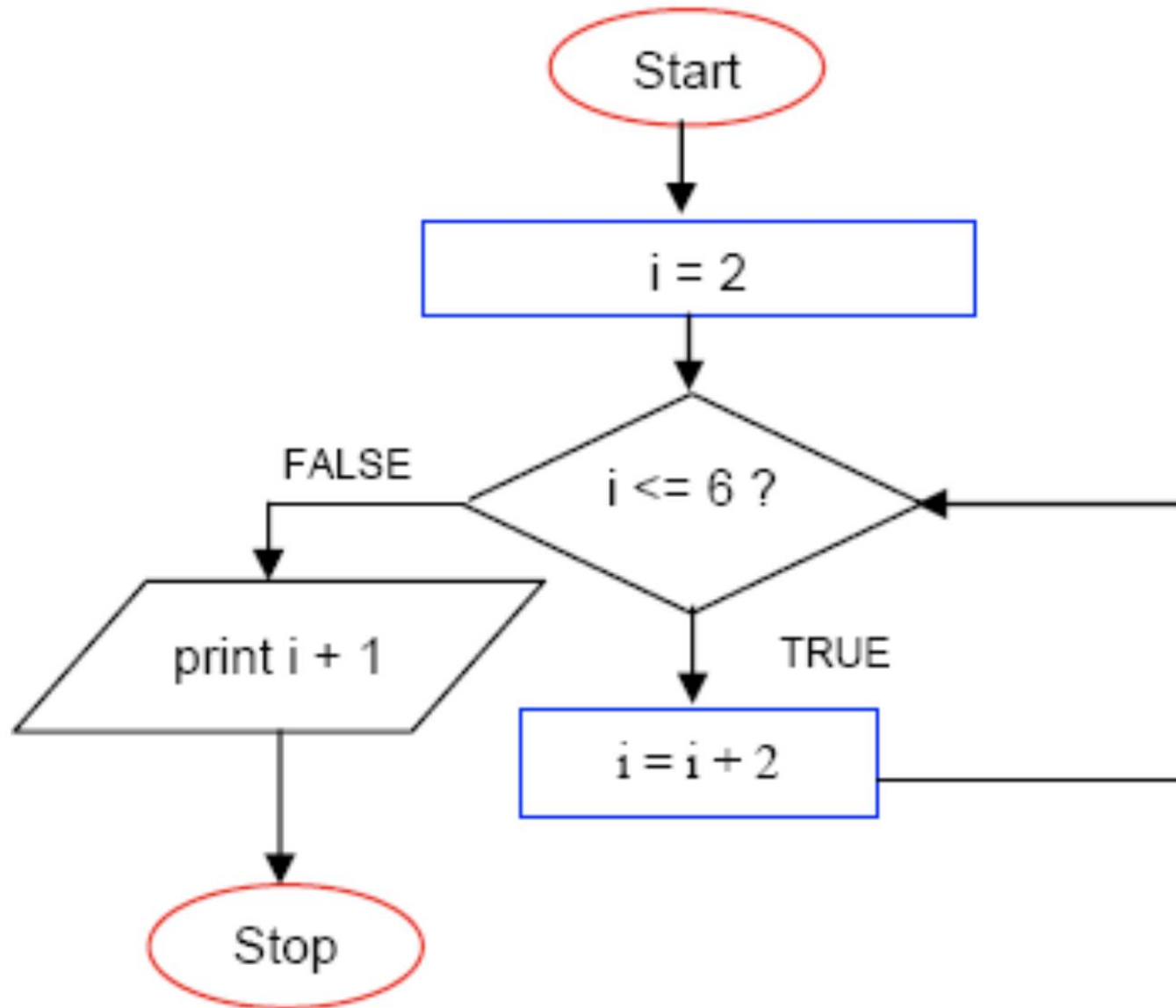
The relational operators in C++ are:

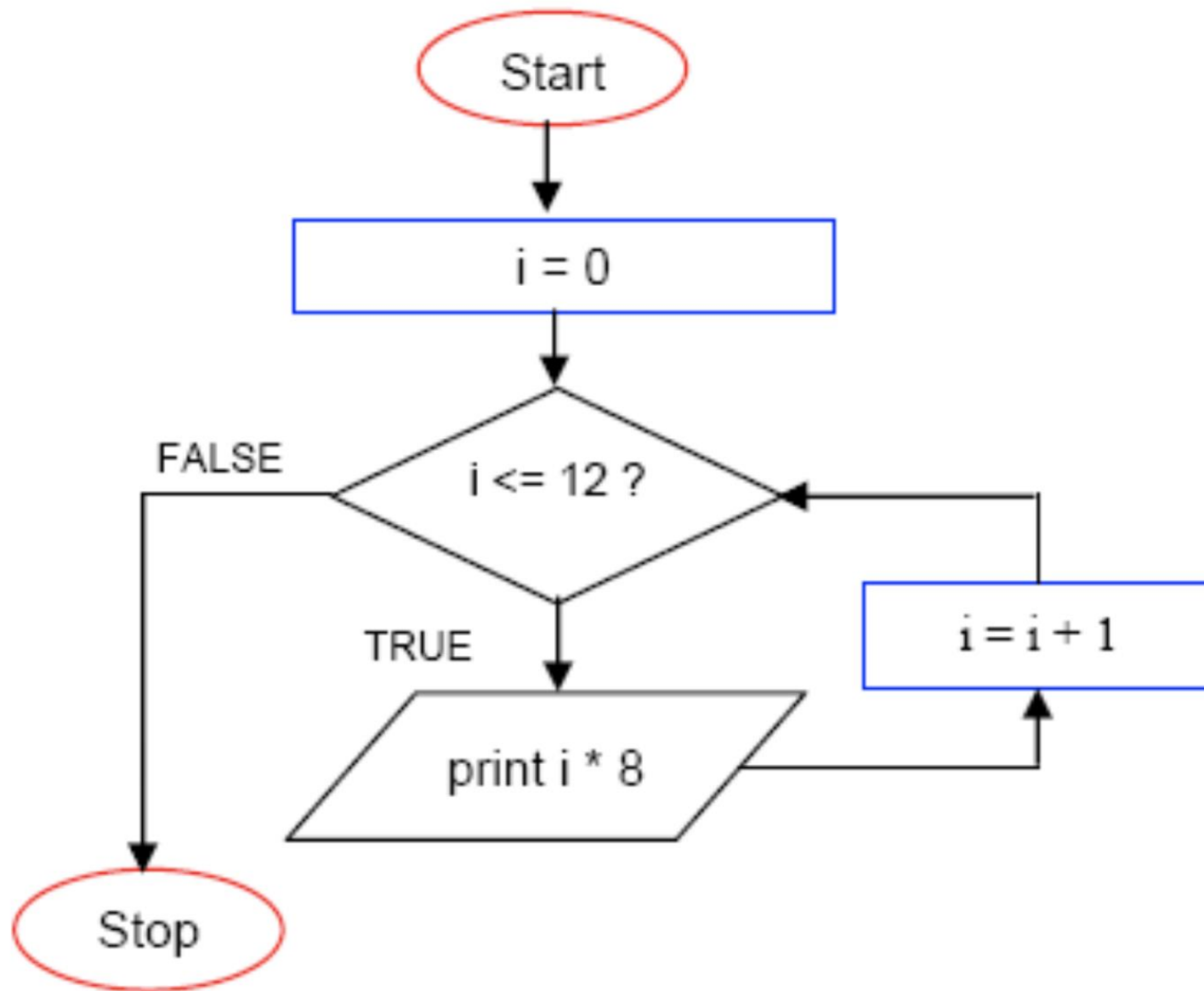
operator	description
==	Equal to
!=	Not equal to
<	Less than
>	Greater than
<=	Less than or equal to
>=	Greater than or equal to



The relational operators in C++ are:

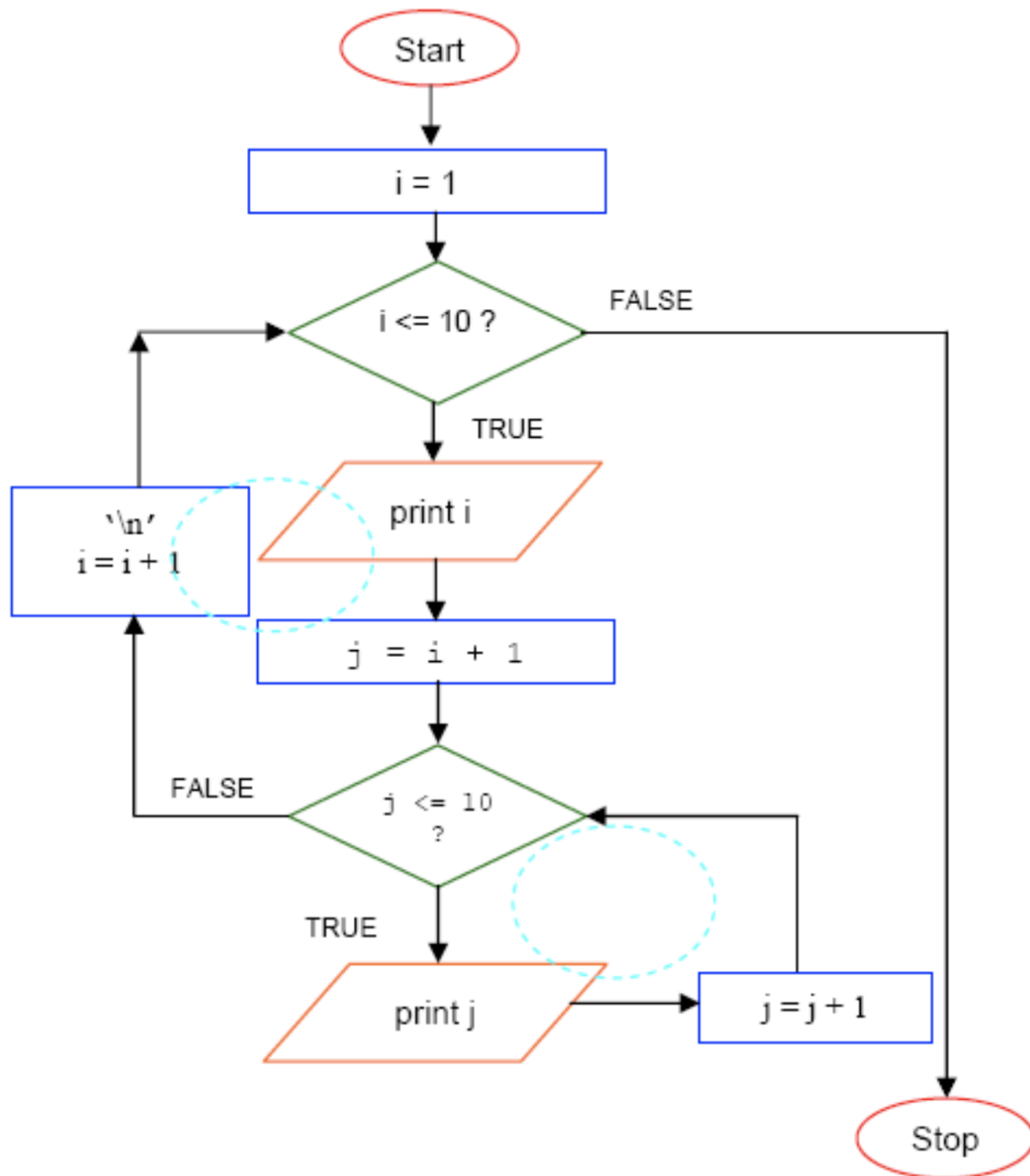
operator	description
==	Equal to
!=	Not equal to
<	Less than
>	Greater than
<=	Less than or equal to
>=	Greater than or equal to





The relational operators in C++ are:

operator	description
==	Equal to
!=	Not equal to
<	Less than
>	Greater than
<=	Less than or equal to
>=	Greater than or equal to



The relational operators in C++ are:

operator	description
<code>==</code>	Equal to
<code>!=</code>	Not equal to
<code><</code>	Less than
<code>></code>	Greater than
<code><=</code>	Less than or equal to
<code>>=</code>	Greater than or equal to