



STEAM CLOWN™ PRODUCTIONS

INTRO TO THE RASPBERRY PI IDLE IDE

A Python class for my Mechatronics Engineering @ SVCTE. Last Updated for the 2018 – 2019 school year

Last Updated: Monday, January 14, 2019



OBJECTIVE, OVERVIEW & INTRODUCTION

- IDLE is the Python IDE that we will be using on the Raspberry Pi. This lecture will introduce IDLE IDE, the Raspbian Desktop and some useful Tips for managing your Python programs
 1. You will be introduced to the IDLE IDE
 2. You will learn how to write your first python.py file and execute it

These slides are an adaption, and companion to the book by Simon Monk "[Programming the Raspberry Pi – getting Started with Python](#)". Created to better target my SVCTE High School Mechatronics Engineering class.





STEAM CLOWN™ PRODUCTIONS



See Appendix A,B,C, for Licensing & Attribution information

CC BY-NC-SA 4.0

<https://creativecommons.org/licenses/by-nc-sa/4.0/>
<https://creativecommons.org/licenses/by-nc-sa/4.0/legalcode>

GNU Public License

Any included Programming Code Is licensed under the GNU General Public License v3.0

EUPL (European Union Public Licence) Code and Content is also licensed under the EUPL 1.2 or later



RESOURCES & MATERIALS NEEDED

- Simon Monks “Programming the Raspberry Pi – Getting Started with Python”
- PC or Laptop
- Access to the Internet
- A Raspberry Pi 3 rev2 or better
- Display (DVI/HDMI) and Keyboard and Mouse



STEAM CLOWN™
& **Squeaky Hinge**
PRODUCTIONS

© Copyright 2018 STEAM Clown™

HOW WILL YOU BE MEASURED

- At the end of this lesson, you be introduced and use the Raspberry Pi IDLE IDE to create, edit and run your first python program
- You will be measured by how well you have followed the lab instructions, and been able to get your hardware working
- How will success be determined? You will be able to show that you can create a new working directory, CD to it and edit python.py files and run them

NEW WORDS OR CONCEPTS...

- IDE
- mkdir
- IDLE



STEAM CLOWN™ PRODUCTIONS

LET'S JUMP INTO THE IDLE IDE

We are going to learn about the Raspberry Pi IDLE IDE



IS YOUR RASPBERRY PI BOOTED?

- As always, when you see we are doing a Python Lesson or Lab, you should have your Raspberry Pi connected, turned on and ready to learn...



STEAM CLOWN™
& **Squeaky Hinge**
PRODUCTIONS

© Copyright 2018 STEAM Clown™



STEAM CLOWN™ PRODUCTIONS

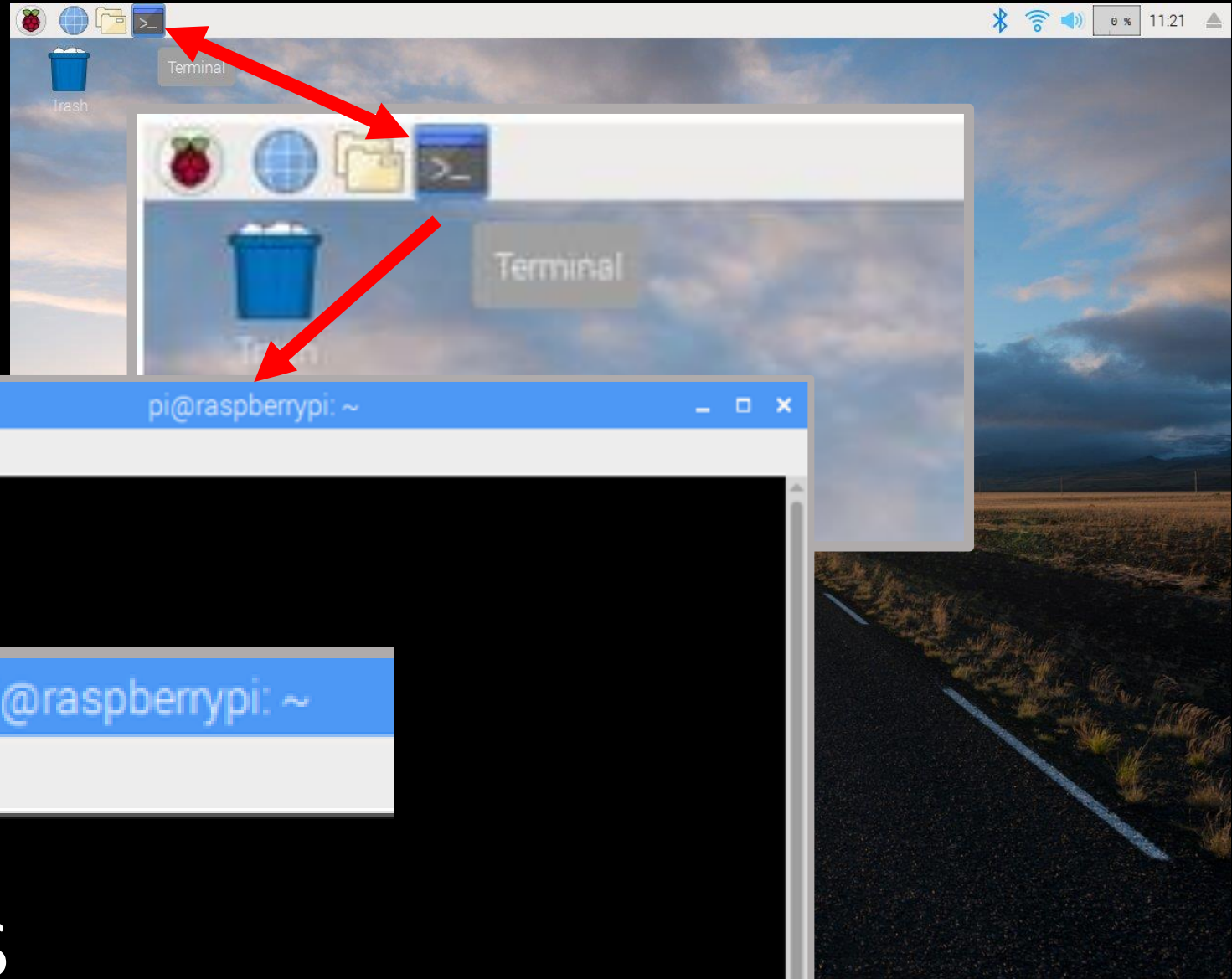
TAKE A DEEP BREATH...

We are about to learn some more about how to create a Directory and a file using the Linux command line commands



TERMINAL

Where lots of Magic happens



STEAM CLOWN™
& **Squeaky Hinge**
PRODUCTIONS

© Copyright 2018 STEAM Clown™

SOME USEFUL COMMANDS

- `pwd`
- `ls`
- `cd`
- `mkdir`
- `cat`

HOW DO I CREATE A NEW DIRECTORY?

- Lets Review

Print Working Directory

```
~ $ pwd
```

```
/home/pi
```

```
~ $ ls
```

List what is in the directory

```
Desktop Downloads Music Public  
Videos Documents MagPi Pictures  
Templates
```

```
~ $
```



THE MKDIR COMMAND

- Creating a new Directory?

```
~ $ ls
```

```
Desktop Downloads Music Public  
Videos Documents MagPi Pictures  
Templates
```

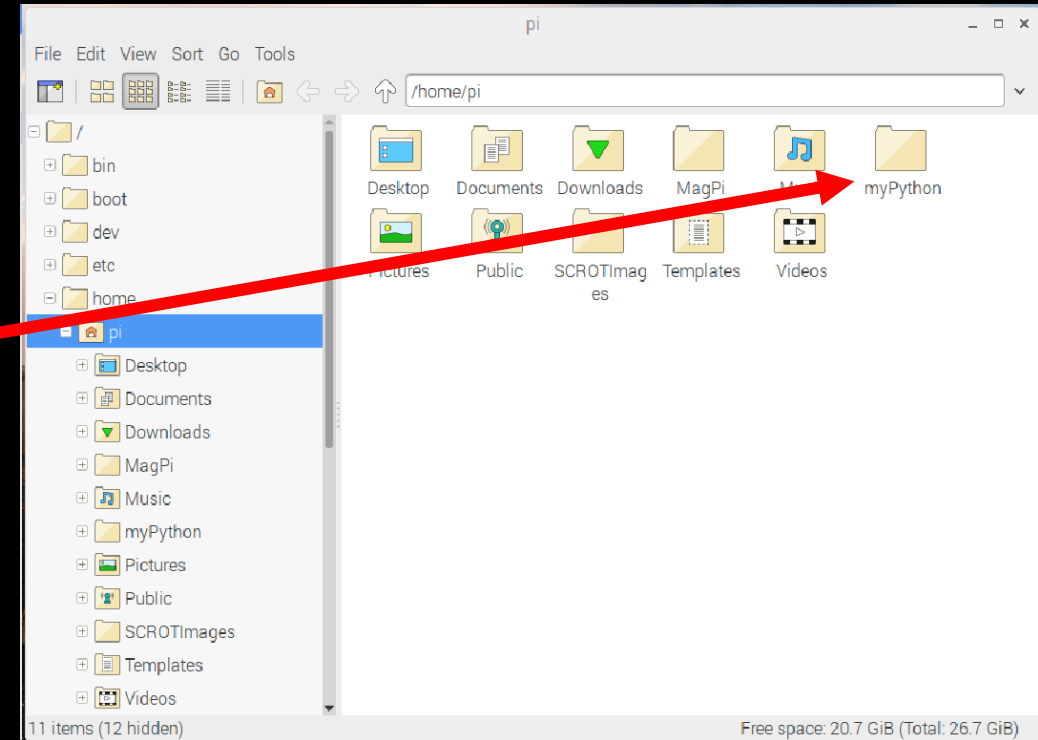
```
~ $ mkdir myPython
```

```
~ $ ls
```

```
Desktop Downloads Music myPython  
Public Videos Documents MagPi  
Pictures Templates
```

```
~ $
```

mkdir



STEAM CLOWN™
& **Squeaky Hinge**
PRODUCTIONS

© Copyright 2018 STEAM Clown™

LET'S CHECK OUT OUR NEW DIRECTORY...

- Type the following:

```
~ $ cd myPython  
~/myPython $ ls
```

- What do you see? Where are you?

CAT

- `cat` is short for 'concatenate' i.e. combining two or more files
- `cat` is also used for creating and viewing text files



<https://www.techinfected.net/2015/06/linux-unix-bsd-cat-command-options-examples.html>



STEAM CLOWN™
& **Squeaky Hinge**
PRODUCTIONS

© Copyright 2018 STEAM Clown™



STEAM CLOWN™ PRODUCTIONS

WAY MORE SLIDES GO HERE...



STEAM CLOWN™
& **Squeaky Hinge**
PRODUCTIONS
© Copyright 2018 STEAM Clown™

PLAY AROUND... CAN YOU SCREEN SHOT MINECRAFT?

- Play around with the desktop and menus
- Can you get screen shot of Minecraft?



STEAM CLOWN™
& **Squeaky Hinge**
PRODUCTIONS

© Copyright 2018 STEAM Clown™



STEAM CLOWN™ PRODUCTIONS

REFERENCE SLIDES



STEAM CLOWN™
& **Squeaky Hinge**
PRODUCTIONS
© Copyright 2018 STEAM Clown™



STEAM CLOWN™ PRODUCTIONS

APPENDIX



STEAM CLOWN™
& **Squeaky Hinge**
PRODUCTIONS

© Copyright 2018 STEAM Clown™



STEAM CLOWN™ PRODUCTIONS

CAN I GET A COPY OF THESE SLIDES? YES, PROBABLY...

Most presentation lecture slides can be found indexed on www.steamclown.org and maybe blogged about here on [Jim The STEAM Clown's Blog](#), and on [STEAM Clown's Mechatronics Engineering Google site](#), where you can search for the presentation title. While you are there, sign up for email updates



APPENDIX A: LICENSE & ATTRIBUTION

- This interpretation is primarily the Intellectual Property of Jim Burnham, Top STEAM Clown, at STEAMClown.org
- This presentation and content is distributed under the Creative Commons License CC-BY-NC-SA 4.0
- My best attempt to properly attribute, or reference any other sources or work I have used are listed in Appendix C



Under the following terms:



Attribution — You must give [appropriate credit](#), provide a link to the license, and [indicate if changes were made](#). You may do so in any reasonable manner, but not in any way that suggests the licensor endorses you or your use.



NonCommercial — You may not use the material for [commercial purposes](#).



ShareAlike — If you remix, transform, or build upon the material, you must distribute your contributions under the [same license](#) as the original.

No additional restrictions — You may not apply legal terms or [technological measures](#) that legally restrict others from doing anything the license permits.

Please maintain this slide with any modifications you make

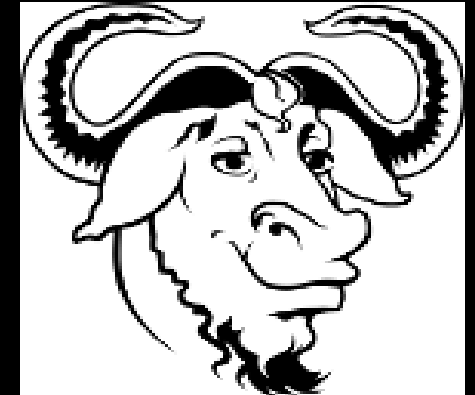


STEAM CLOWN™
& **Squeaky Hinge**
PRODUCTIONS

© Copyright 2018 STEAM Clown™

APPENDIX B: CODE LICENSE & ATTRIBUTION

- This interpretation is primarily the Intellectual Property of Jim Burnham, Top STEAM Clown, at STEAMClown.org
- The programming code found in this presentation or linked to on my Github site is distributed under the:
 - GNU General Public License v3.0
 - European Union Public Licence EUPL 1.2 or later
- My best attempt to properly attribute, or reference any other sources or work I have used are listed in Appendix C



Please maintain this slide with any modifications you make



STEAM CLOWN™
& **Squeaky Hinge**
PRODUCTIONS

© Copyright 2018 STEAM Clown™

APPENDIX C: PRIMARY SOURCES & ATTRIBUTION FOR MATERIAL USED

- Linux Command line tutorial
- <https://www.techinfected.net/2015/06/linux-unix-bsd-cat-command-options-examples.html>

Please maintain this slide with any modifications you make



STEAM CLOWN™
& **Squeaky Hinge**
PRODUCTIONS

© Copyright 2018 STEAM Clown™



STEAM CLOWN™
& **Squeaky Hinge**
PRODUCTIONS

© Copyright 2018 STEAM Clown™


```
pi@raspberrypi: ~  
File Edit Tabs Help  
pi@raspberrypi:~ $ pwd  
/home/pi  
pi@raspberrypi:~ $ ls  
Desktop Downloads Music Public Templates  
Documents MagPi Pictures SCROTImages Videos  
pi@raspberrypi:~ $ mkdir myPython  
pi@raspberrypi:~ $ ls  
Desktop Downloads Music Pictures SCROTImages Videos  
Documents MagPi myPython Public Templates  
pi@raspberrypi:~ $
```